

Proposal Introduction: 2022 Transit Expansion and Millage

May 2022

Matt Carpenter, CEO TheRide

Meeting Purpose and Agenda

Purpose

- Introduce 2022 millage proposal
(Will appear on August ballot)

Agenda

1. Long-Range Plan
2. 2022 Ballot Proposal
3. Timeline



Key Points

- 5-year, 2.38 mills (1.68 mill increase) to maintain and expand services
- Follows extensive public input, Board direction and local policy documents
- Benefits for seniors, persons with disabilities or low incomes, workers, students, car-free, etc.
- TheRide can leverage outside funds with local tax revenue
- Outlined in **Long-Range Plan** and **2022 Proposal**



Long-Range & Short-Range Plans

- **Long-Range Plan: TheRide2045**
 - 25-year vision & blueprint
 - Includes five, 5-year millage votes
 - Built-in voter decisions
- **Short-Range: 2022 5-year ballot measure**
 - 2024-2028
 - First five years of Long-Range Plan
 - 2.38 mills (0.7 existing + 1.68 mill new)



Goals

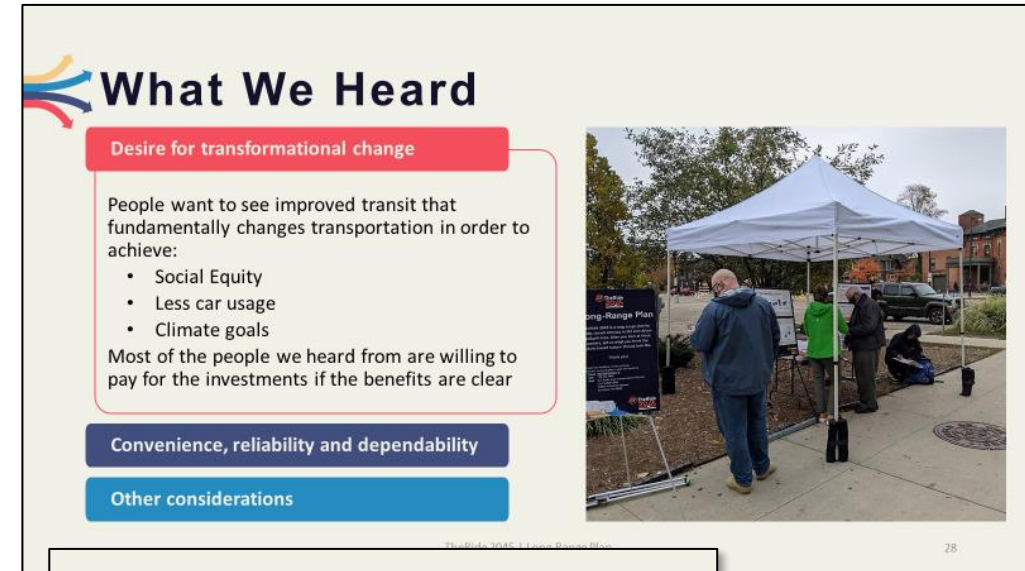
Community Values Drive Transit's Goals:

- 🎯 Increase social equity, access to jobs, education, and housing
- 🎯 Help the environment and reduce air pollution
- 🎯 Support existing and new businesses



Public & Stakeholder Engagement

- Long-Range Plan & Millage involvement
 - Public & stakeholder meetings
 - Virtual meetings
 - On-Line survey
 - 1,400+ contacts
- Round 2 (Oct 2021) included four scenarios with mill rates
 - Strong desire for increased services



What We Heard

Desire for transformational change


People want to see improved transit that fundamentally changes transportation in order to achieve:

- Social Equity
- Less car usage
- Climate goals

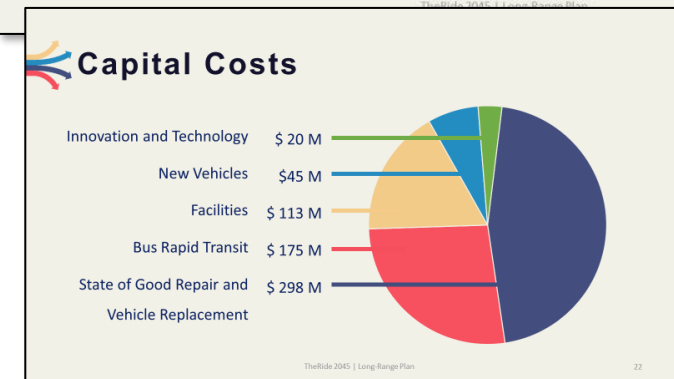
Most of the people we heard from are willing to pay for the investments if the benefits are clear

Convenience, reliability and dependability

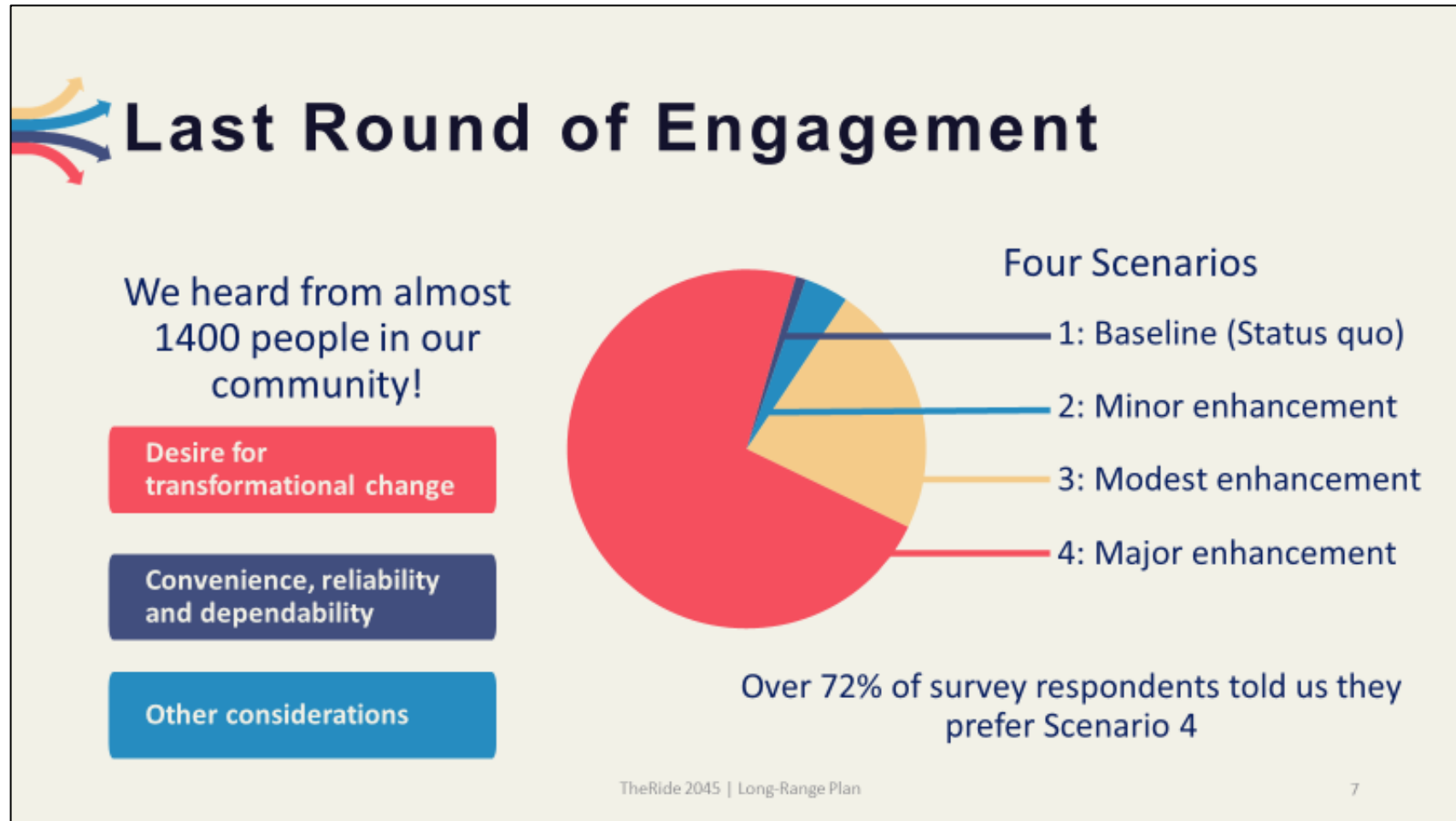
Other considerations



28

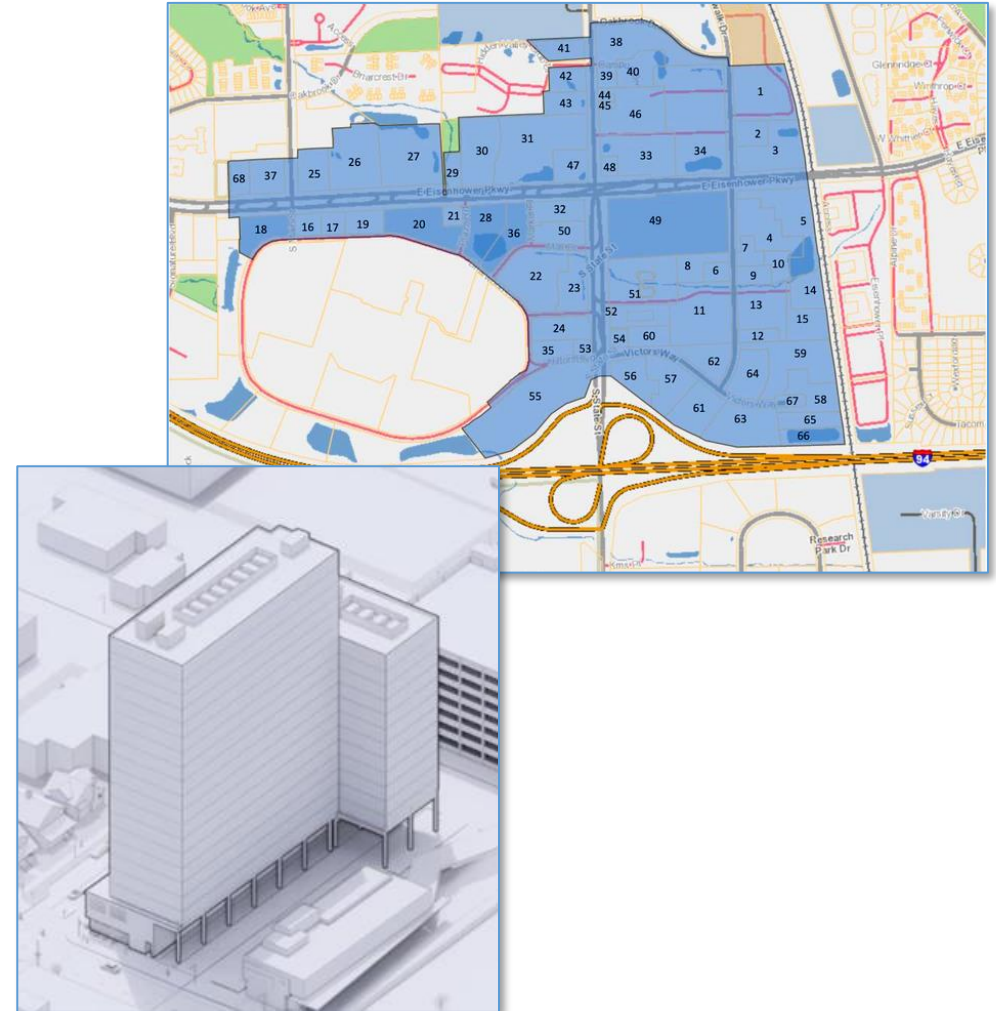


Public & Stakeholder Engagement



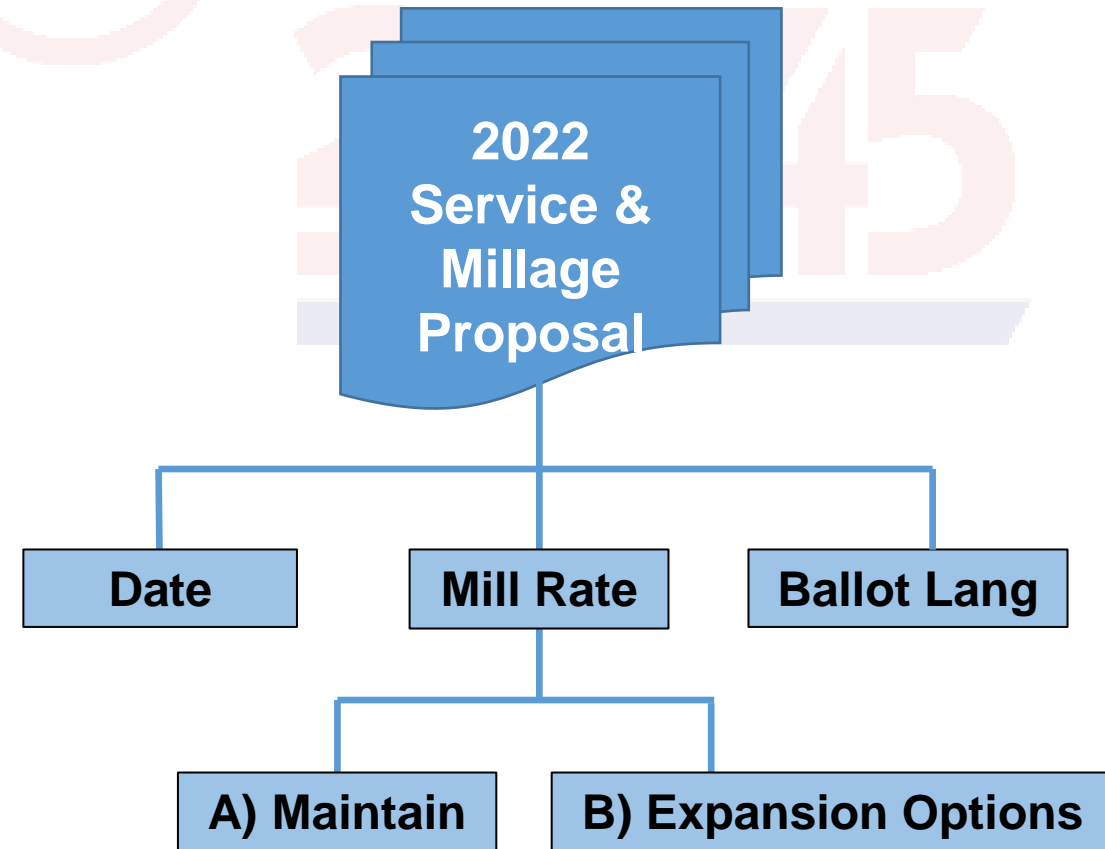
Recent Successes & Momentum

- Earmark from Sen. Peters: \$300,000 for Ypsilanti Transit Center
- Ann Arbor council approval for Y-Lot terminal expansion concept
- Ann Arbor council approval for T1 (transit supportive zoning)



2022 Proposal

- Maintains all AAATA services
- Expansion of key services
- Aligned with goals and Long-Range Plan
- Maximizes state and federal funding



A. Maintaining Existing Service

Necessary to maintain services:

1. Renewal of Existing Millage (0.7)
2. Deficit Allowance
3. Inflation Allowance
4. Staffing



B. Service Enhancement Options

Opportunities to enhance services, help community, advance goals

5. Ann Arbor-Ypsilanti Downtown Express
6. Longer Hours of Service
7. Increased Frequency of Service
8. Expand Overnight Service
9. Customer Service Agents (YTC)
10. Funding for Major Capital Projects



5. Ann Arbor-to-Ypsilanti Express

Limited-stop express route along Washtenaw Ave. Departures every...

- Increases speed by 1/3
- Increase integration of Ann Arbor and Ypsilanti. Brings all opportunities closer together.
- Workers & employers, education, medical, social, housing



6. Longer Hours of Operation, Systemwide

Consistently longer hours of operation

- Consistent longer hours of evening service, weekend and weekdays
- Today some routes stop or start earlier than others
- Earlier Saturday service



7. Increase Weekend Frequency, Systemwide

More buses on the weekends

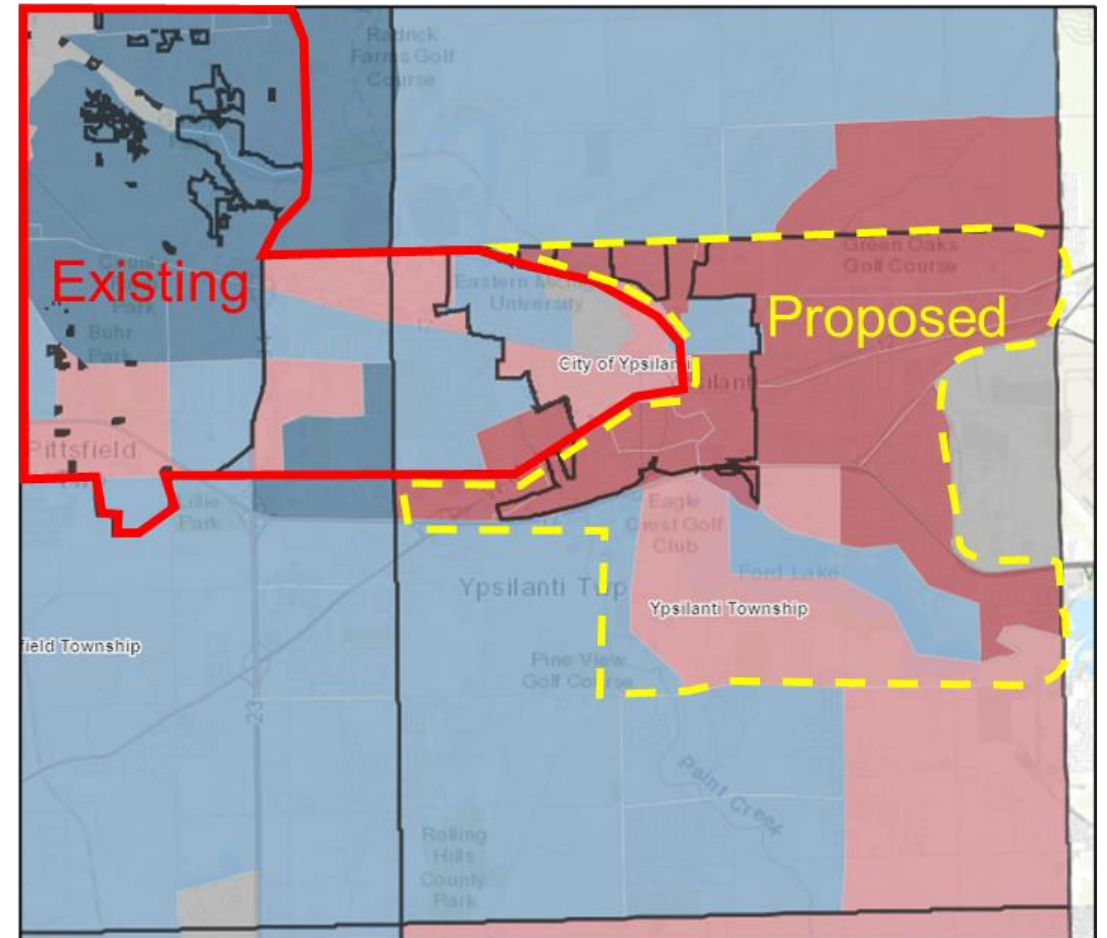
- Increases all 60-minute service to every 30-minutes
- Frequency = Freedom
- Increases flexibility and independence
- Benefits: seniors, persons with disabilities or low income, car-free lifestyle, workers



8. Expand Overnight Service to Ypsilanti, Ypsilanti Township

Add overnight and holiday service

- Presently, overnight service (NightRide) only in Ann Arbor, and parts of Ypsi and Ypsi Twp
- Will expand NightRide to all of City of Ypsi, all of Ypsi Twp north of Textile Road.



9. Customer Service Agents at Ypsi Center

In-person agents at Ypsilanti Transit Center

- Weekdays during regular business hours
- Ypsi Transit Center has not had these staff in years. Ann Arbor does.
- Would allow ticket sales, Q/A, and all equivalent services.
- Bring poor office space up to standards.



10. Funding Major Capital Projects

Capital sinking fund for future projects

- Can be used for terminals, BRT, garage, etc.
- Can help fund *zero-emission buses*
- Need local funds to leverage 50% federal grants



2022 Service Proposal Summary

Elements and Costs of 2022 Service and Millage Proposal						
	Annual Cost (Gross)*		Mill Rate (Net)*		Cumulative Mill Rate	Start Date **
	\$	% of Total Costs	Rate	% of Total Rate		
Maintain Existing Services						
1. Renewal of existing millage	\$ 5,600,000	26%	0.70	29%	0.70	Aug 2024
2. Allowance for deficit	\$ 4,800,000	22%	0.60	25%	1.30	Aug 2024
3. Allowance for inflation	\$ 1,280,000	6%	0.13	5%	1.43	Aug 2024
4. Additional Staff (9 FTEs)	\$ 940,000	4%	0.09	4%	1.52	2023-2024
Subtotal	\$ 12,620,000	58%	1.52	64%		
Service Enhancement Options						
5. Ann Arbor-Ypsilanti Express Service	\$ 930,000	4%	0.07	3%	1.59	Aug 2024
6. Longer Hours of Operation Systemwide	\$ 1,901,000	9%	0.15	6%	1.74	Aug 2024
7. Increase Weekend Frequency Systemwide	\$ 1,996,000	9%	0.14	6%	1.88	Aug 2024
8. Expand Overnight Service (Ypsi Twp & Ypsi)	\$ 1,066,000	5%	0.09	4%	1.97	Aug 2024
9. Customer Service Agents (Ypsi Transit Center)	\$ 184,000	1%	0.01	0%	1.98	2023-2024
10. Funding Major Capital Projects	\$ 3,200,000	15%	0.40	17%	2.38	2024
Subtotal	\$ 9,277,000	42%	0.86	36%		
Totals	\$ 21,897,000		2.38			

Full proposal
document at
www.TheRide.org

Timeline

- **2019-2022:** General Public Involvement
- **March-April 2022:** Millage proposal released, feedback, presentations to stakeholders
- **March 17th:** AAATA Board Discussion
- **April 21st:** AAATA Board Decision
- **August 2:** Election



Key Points

- 5-year, 2.38 mills (1.68 mill increase) to maintain and expand services
- Follows extensive public input, Board direction and local policy documents
- Benefits for seniors, persons with disabilities or low incomes, workers, students, car-free, etc.
- TheRide can leverage outside funds with local tax revenue
- Outlined in **Long-Range Plan** and **2022 Proposal**



Contact Information

Please send any questions
regarding this presentation to

Matt Carpenter, CEO

mcarpenter@theride.org

(734) 794-1767



Proposal Introduction: 2022 Transit Expansion and Millage

May 2022

Matt Carpenter, CEO TheRide